



**India Meteorological Department**

**(Ministry of Earth Sciences)**

**NATIONAL BULLETIN NO.: 01 (BOB/03/2023)**

**TIME OF ISSUE: 0950 HOURS IST**

**DATED: 08.09.2023**

**FROM: INDIA METEOROLOGICAL DEPARTMENT (FAX NO. 24643965/24699216/24623220)**

**TO: CONTROL ROOM, NDM, MINISTRY OF HOME AFFAIRS (FAX.NO. 23093750)**

**CONTROL ROOM NDMA (FAX.NO. 26701729)**

**CABINET SECRETARIAT (FAX.NO.23012284, 23018638)**

**PS TO HON'BLE MINISTER FOR S & T AND EARTH SCIENCES (FAX NO.23316745)**

**SECRETARY, MOES (FAX NO. 24629777)**

**H.Q. (INTEGRATED DEFENCE STAFF AND CDS) (FAX NO. 23005137/23005147)**

**DIRECTOR GENERAL, DOORDARSHAN (23385843)**

**DIRECTOR GENERAL, AIR (23421105, 23421219)**

**PIB MOES (FAX NO. 23389042)**

**UNI (FAX NO. 23355841)**

**D.G. NATIONAL DISASTER RESPONSE FORCE (NDRF) (FAX NO. 26105912, 2436 3260)**

**DIRECTOR, PUNCTUALITY, INDIAN RAILWAYS (FAX NO. 23388503)**

**CHIEF SECRETARY, WEST BENGAL (FAX NO. 033-22144328)**

**CHIEF SECRETARY, ODISHA (FAX NO. 0674-2536660)**

**CHIEF SECRETARY, ANDHRA PRADESH (FAX NO. 0863-2441029, 08645-246600)**

**CHIEF SECRETARY, JHARKHAND (FAX NO. 0651-2400255)**

**CHIEF SECRETARY, CHHATTISGARH (FAX NO. 0771-2221206)**

**CHIEF SECRETARY, TELANGANA (FAX NO. 040-23453700)**

**ADMINISTRATOR, ANDAMAN & NICOBAR ISLANDS (FAX NO. 03192- 232656)**

**Sub: Depression formed over westcentral and adjoining northwest Bay of Bengal**

Yesterday's well-marked low pressure area over northwest & central Bay of Bengal concentrated into a depression and lay centered at 0530 hours IST of today, the 8<sup>th</sup> September, 2024 over westcentral and adjoining northwest Bay of Bengal near latitude 18.0°N and longitude 87.0°E, about 310 km east of Kalingapatnam (Andhra Pradesh), 260 km east-southeast of Gopalpur(Odisha), 290 km south-southeast of Paradip (Odisha) and 410 km south of Digha (West Bengal).

It is very likely to move nearly northwestwards towards north Odisha-West Bengal coasts and intensify into a deep depression during next 24 hours. Thereafter, it is very likely to move west-northwestwards across north-Odisha-Gangetic West Bengal, Jharkhand and adjoining north Chhattisgarh during subsequent 2 days.

**Warnings:**

**(i) Rainfall warning**

**Coastal Andhra Pradesh & Yanam:** Light to moderate rainfall at most places is very likely with heavy to very heavy rainfall at a few places and extremely heavy rainfall at isolated places on 08<sup>th</sup> and 9<sup>th</sup> and heavy rainfall on 10<sup>th</sup> September.

**Odisha:** Light to moderate rainfall at most places is very likely with heavy to very heavy rainfall at isolated places very likely during 08<sup>th</sup>-10<sup>th</sup>; extremely heavy rainfall at isolated places over south Odisha on 9<sup>th</sup>; heavy to very heavy rainfall on 10<sup>th</sup> and heavy rainfall on 11<sup>th</sup> September.

**Telangana:** Light to moderate rainfall at many places is likely with heavy to very heavy rainfall at isolated places very likely on 08<sup>th</sup> & 9<sup>th</sup>; heavy rainfall on 10<sup>th</sup> September.

**Chhattisgarh:** Light to moderate rainfall at most places is likely with heavy to very heavy rainfall at isolated places during 08<sup>th</sup>-10<sup>th</sup> and heavy rainfall on 11<sup>th</sup> September.

**Gangetic West Bengal:** Light to moderate rainfall at most places with heavy rainfall at isolated places very likely during 10<sup>th</sup>-12<sup>th</sup> September.

**Jharkhand:** light to moderate rainfall at most places is very likely with heavy rainfall at isolated places on 9<sup>th</sup>; heavy to very heavy rainfall during 10<sup>th</sup>-11<sup>th</sup> and heavy rainfall on 12<sup>th</sup> September.

**Spatial rainfall distribution: Isolated: <25%, A few: 26-50%, Many: 51-75%, Most: 76-100%**

**Rainfall amount (mm): Heavy rain: 64.5 – 115.5, Very heavy rain: 115.6 – 204.4, Extremely heavy rain: 204.5 or more.**

## (ii) Wind warning

Squally wind speed of 45-55 kmph gusting to 65 kmph is currently prevailing over Northwest and adjoining Northeast & Central Bay of Bengal and 40-50 kmph gusting to 60 kmph along & off North Andhra Pradesh-Odisha-West Bengal coasts. It is likely to increase becoming 50-60 kmph gusting to 70 kmph over the same region from night of today, the 8<sup>th</sup> September till morning of 10<sup>th</sup> September and decrease gradually thereafter.

**(iv) Sea Condition:** Rough to very rough sea condition over Northwest and adjoining Northeast & Central Bay of Bengal and along & off North Andhra Pradesh-Odisha-West Bengal coasts from today, the 8<sup>th</sup> September till morning of 10<sup>th</sup> and rough sea condition on 11<sup>th</sup> September.

## (v) Fishermen Warning

Fishermen are advised not to venture into Northwest and adjoining Northeast & Central Bay of Bengal; along & off North Andhra Pradesh-Odisha-West Bengal coasts till forenoon of 11<sup>th</sup> September.

## (vi) Flash Flood Guidance: (Graphics Attached)

### 24 hours Outlook for the Flash Flood Risk (FFR) till 0530 IST of 09-09-2024 :

Low to Moderate flash flood risk likely over few watersheds & neighbourhoods of following Met Sub-divisions during next 24 hours.

**Odisha** - Baragarh, Bauda, Ganjam, Jagatsinghapur, Kalahandi, Kandhamal, Kendraparha, Khordha, Koraput, Nayagarh, Puri and Rayagarha districts.

Surface runoff/ Inundation may occur at some fully saturated soils & low-lying areas over Area of Concern as shown in map due to expected rainfall occurrence in next 24 hours.

## (vii) Impact Expected (coastal Andhra Pradesh, Odisha, Chhattisgarh, Telangana, Jharkhand and West Bengal due to heavy Rainfall)

- ✓ Localized Flooding of roads, water logging in low lying areas and closure of underpasses mainly in urban areas of the above region.
- ✓ Occasional reduction in visibility due to heavy rainfall.
- ✓ Reduction of visibility over sea area due to sea spray induced by strong wind and heavy rainfall.
- ✓ Disruption of traffic in major cities due to water logging in roads leading to increased travel time.
- ✓ Minor damage to kutcha roads.
- ✓ Possibilities of damage to vulnerable structure.
- ✓ Localized Landslides/Mudslides/landslips/mud slips/land sinks/mud sinks.
- ✓ Damage to horticulture and standing crops in some areas due to inundation.
- ✓ It may lead to riverine flooding in some river catchments (for riverine flooding please visit Web page of CWC)

## (viii) Action Suggested (coastal Andhra Pradesh, Odisha, Chhattisgarh, Telangana, Jharkhand and West Bengal due to heavy Rainfall)

- ✓ Judicious regulation of offshore/onshore Operations
- ✓ Judicious regulation of surface transports including railways and roadways.
- ✓ Check for traffic congestion on your route before leaving for your destination.
- ✓ Follow any traffic advisories that are issued in this regard.
- ✓ Avoid going to areas that face the water logging problems often.
- ✓ Avoid staying in vulnerable structure.

## Agromet advisories for Heavy Rainfall likely over various parts of the country

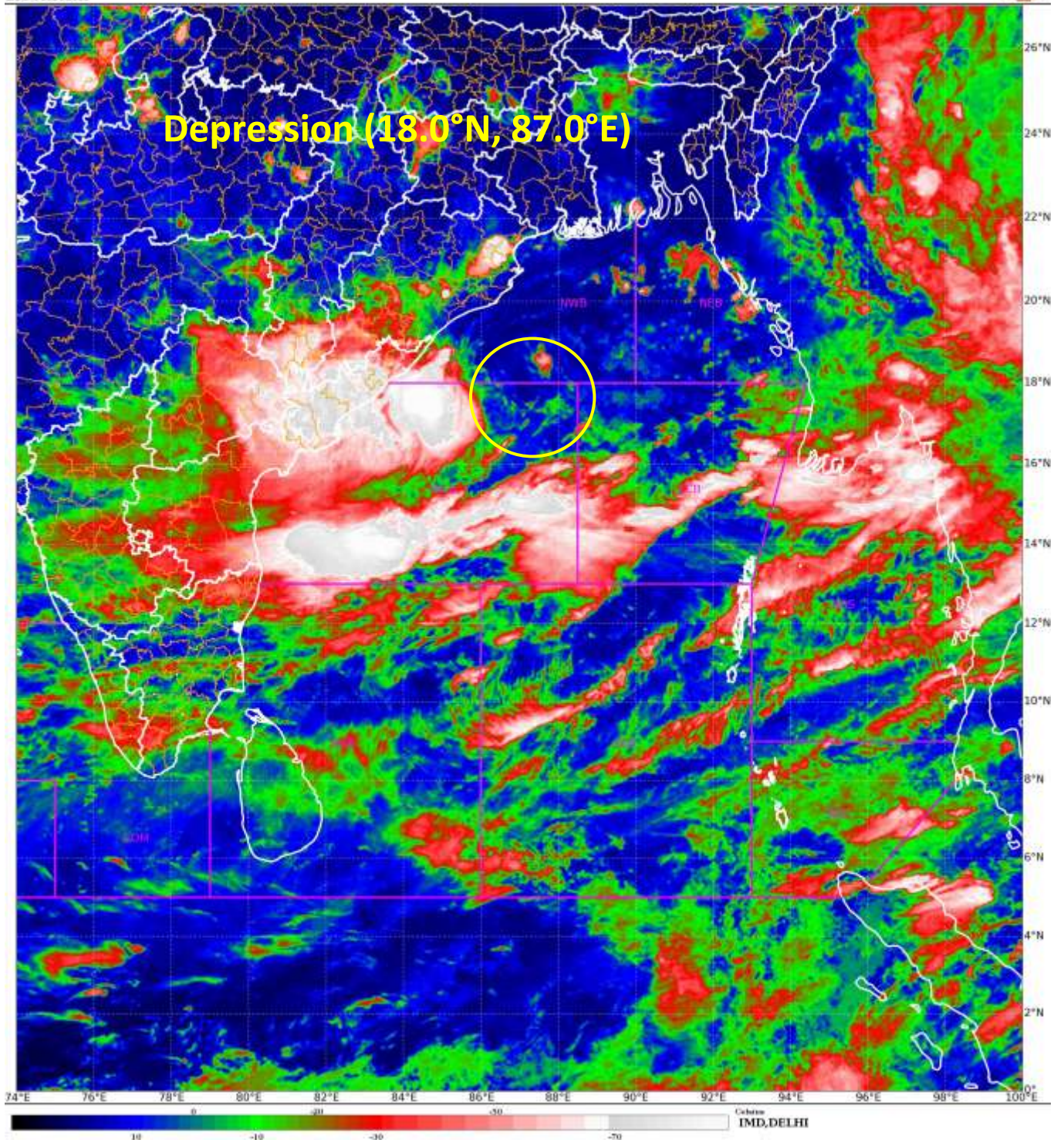
- ✓ Drain out excess water from rice, soybean, red gram, maize, cotton and turmeric in **Telangana**; from rice, finger millet, maize and groundnut in **Odisha** to prevent water logging.
- ✓ Postpone transplanting of rice in North Coastal **Andhra Pradesh**.
- ✓ Provide mechanical support to horticultural crops & staking to vegetables.
- ✓ Keep the harvested produce at safer place.

**The next bulletin will be issued at 1130hrs IST of today, 8<sup>th</sup> September, 2024.**

**(Dr. Ananda Kumar Das)**  
**Scientist- F, RSMC, New Delhi**

Copy to: CRS, Pune/ACWC Kolkata/ACWC Chennai/CWC Bhubaneswar/CWC Visakhapatnam/MO Port Blair/MC Raipur/MC Ranchi/MC Hyderabad/MC Amaravati

Spatial rainfall distribution: Isolated: <25%, A few: 26-50%, Many: 51-75%, Most: 76-100%  
Rainfall amount (mm): Heavy rain: 64.5 – 115.5, Very heavy rain: 115.6 – 204.4, Extremely heavy rain: 204.5 or more.



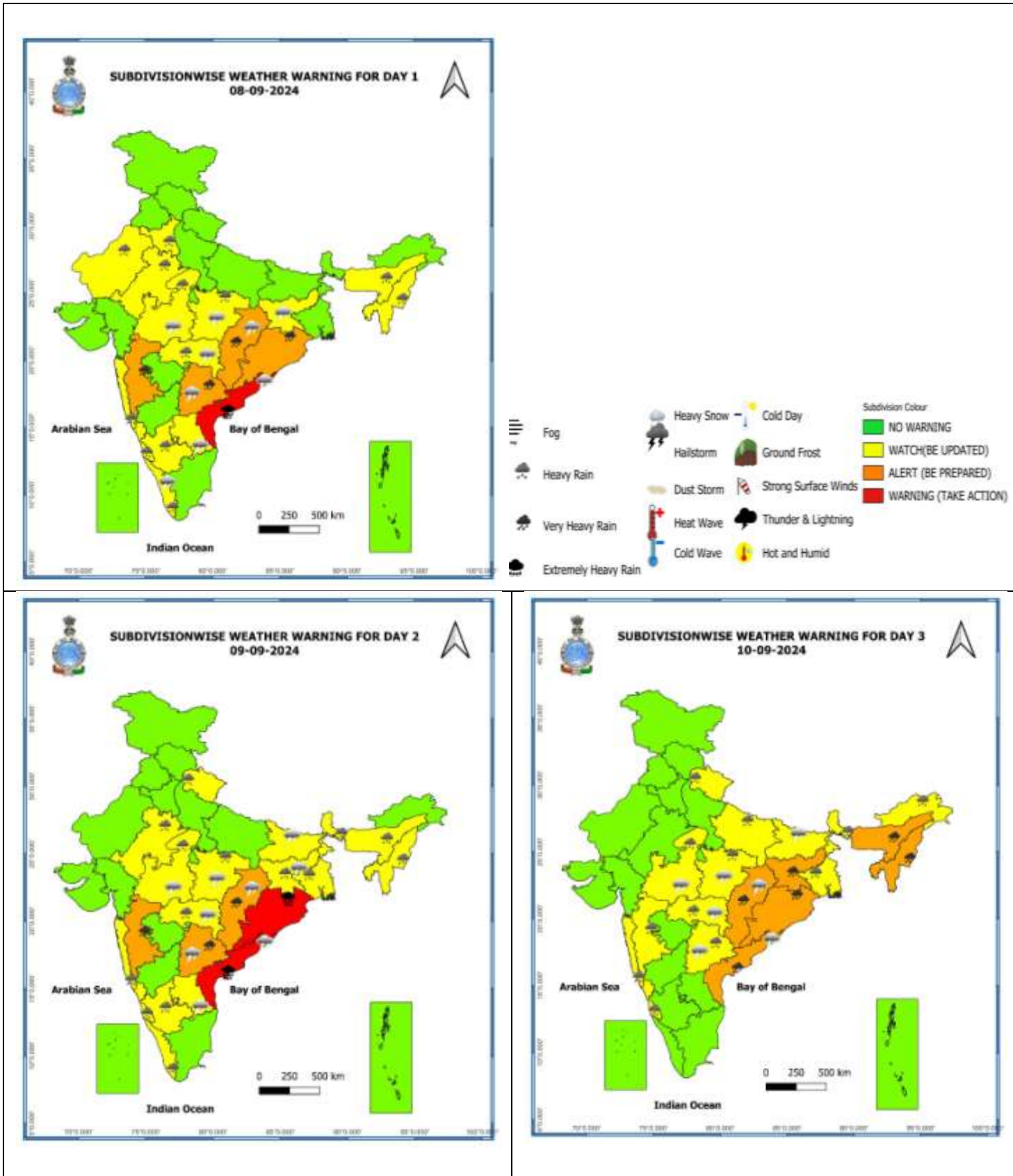
**Spatial rainfall distribution: Isolated: <25%, A few: 26-50%, Many: 51-75%, Most: 76-100%**  
**Rainfall amount (mm): Heavy rain: 64.5 – 115.5, Very heavy rain: 115.6 – 204.4, Extremely heavy rain: 204.5 or more.**

## DEPRESSION OVER WESTCENTRAL AND ADJOINING NORTHWEST BAY OF BENGAL BASED ON 0530 HRS IST of 8<sup>th</sup> SEPTEMBER, 2024

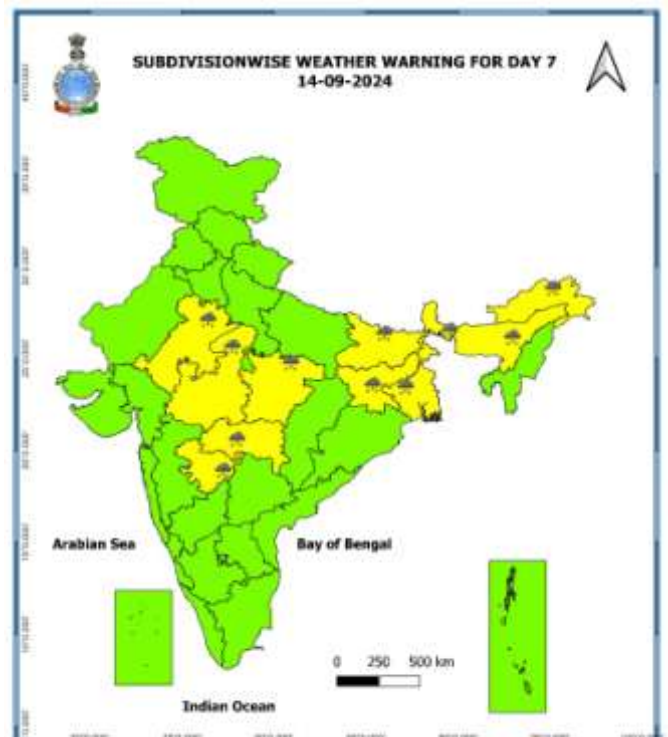
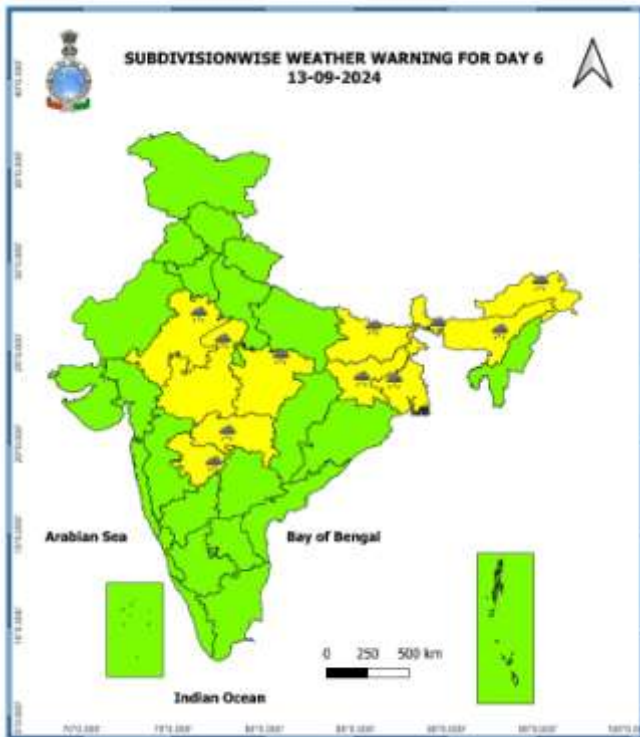
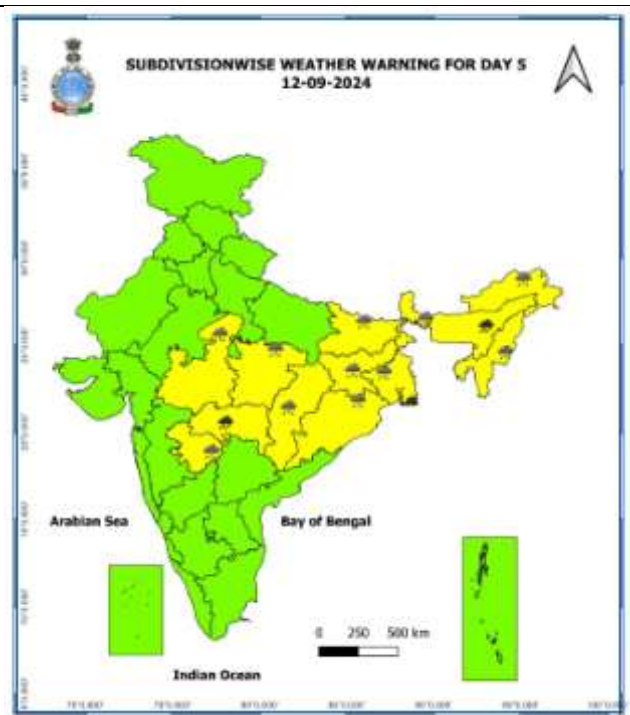
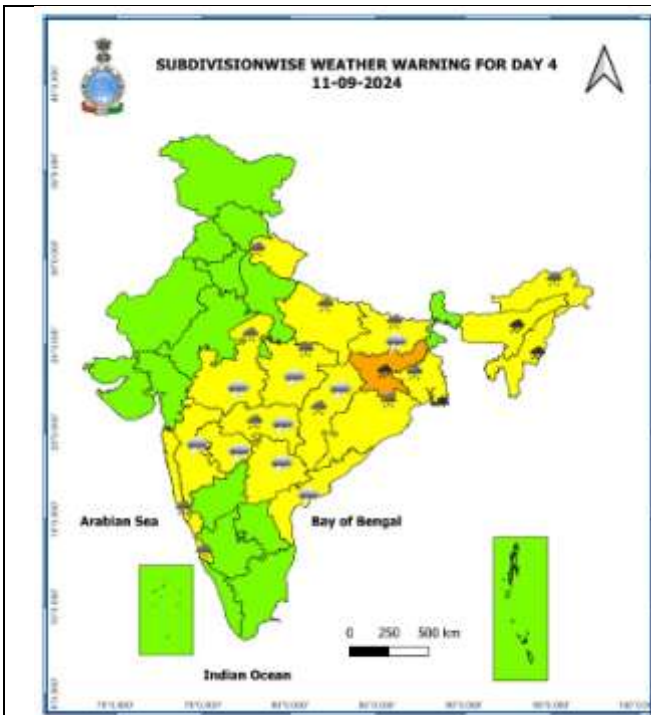


Spatial rainfall distribution: Isolated: <25%, A few: 26-50%, Many: 51-75%, Most: 76-100%  
Rainfall amount (mm): Heavy rain: 64.5 – 115.5, Very heavy rain: 115.6 – 204.4, Extremely heavy rain: 204.5 or more.

## Warning Graphics



**Spatial rainfall distribution: Isolated: <25%, A few: 26-50%, Many: 51-75%, Most: 76-100%**  
**Rainfall amount (mm): Heavy rain: 64.5 – 115.5, Very heavy rain: 115.6 – 204.4, Extremely heavy rain: 204.5 or more.**



- Action may be taken based on **ORANGE AND RED** COLOUR warnings.
- Vulnerable regions likely urban and hilly areas action may be initiated for heavy rainfall warning.
- As the lead period increases forecast accuracy decreases.

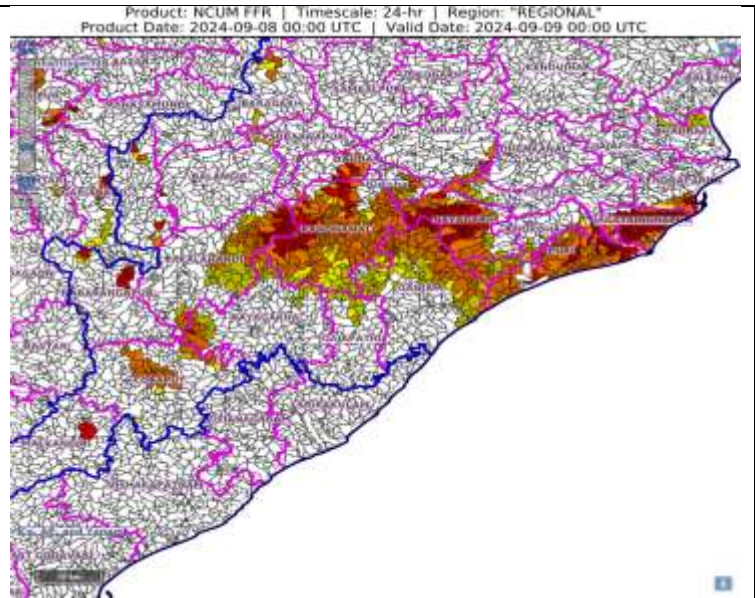
Spatial rainfall distribution: Isolated: <25%, A few: 26-50%, Many: 51-75%, Most: 76-100%  
 Rainfall amount (mm): Heavy rain: 64.5 – 115.5, Very heavy rain: 115.6 – 204.4, Extremely heavy rain: 204.5 or more.

**24 hours Outlook for the Flash Flood Risk (FFR) till 0530 IST of 09-09-2024**

⋮  
**Low to Moderate flash flood risk** likely over few watersheds & neighbourhoods of following Met Sub-divisions during next 24 hours.

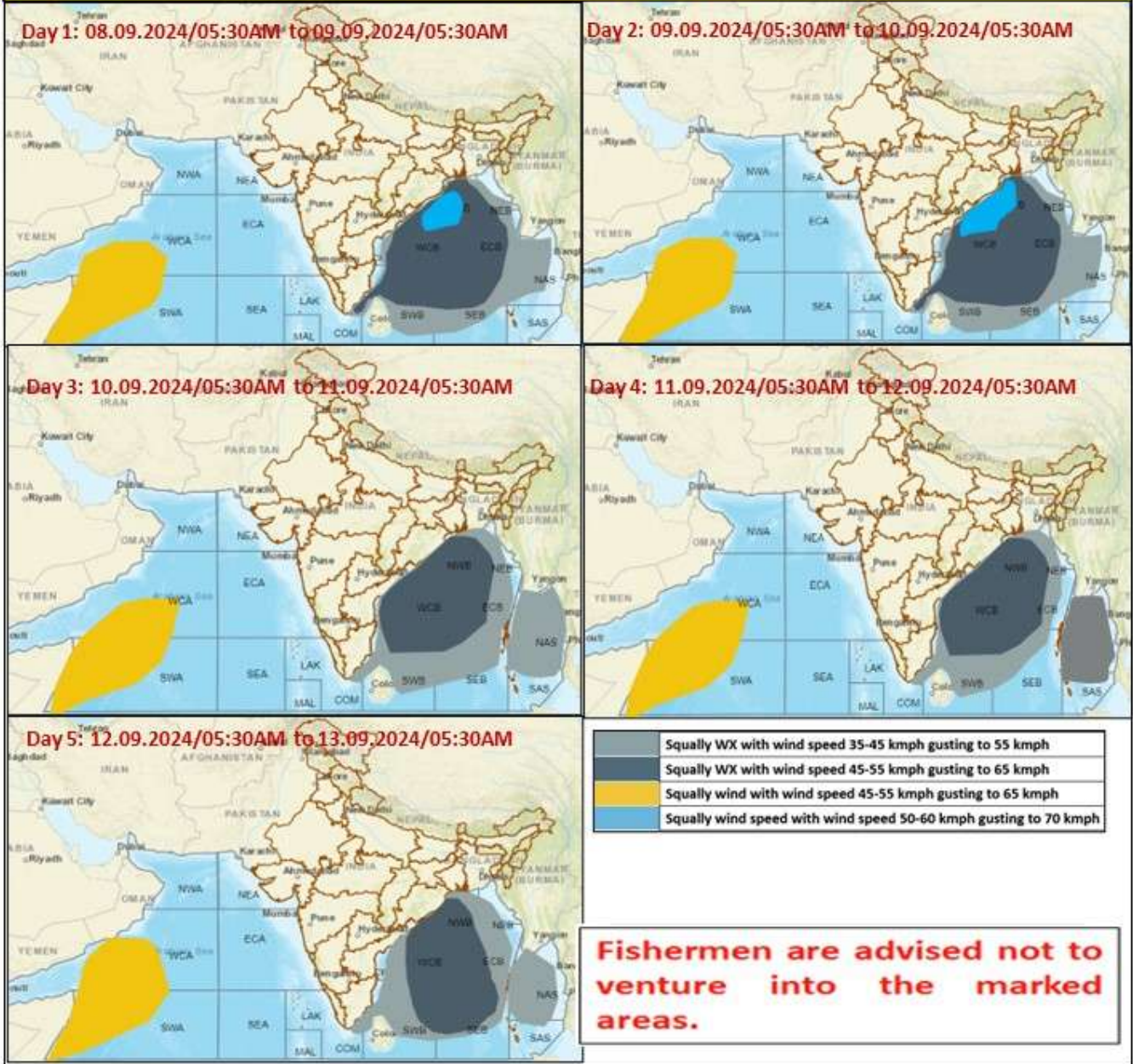
**Odisha** - Baragarh, Bauda, Ganjam, Jagatsinghapur, Kalahandi, Kandhamal, Kendraparha, Khordha, Koraput, Nayagarh, Puri and Rayagarha districts.

Surface runoff/ Inundation may occur at some fully saturated soils & low-lying areas over Area of Concern as shown in map due to expected rainfall occurrence in next 24 hours.



**Spatial rainfall distribution: Isolated: <25%, A few: 26-50%, Many: 51-75%, Most: 76-100%**  
**Rainfall amount (mm): Heavy rain: 64.5 – 115.5, Very heavy rain: 115.6 – 204.4, Extremely heavy rain: 204.5 or more.**

## Fishermen warning graphics



Spatial rainfall distribution: Isolated: <25%, A few: 26-50%, Many: 51-75%, Most: 76-100%  
 Rainfall amount (mm): Heavy rain: 64.5 – 115.5, Very heavy rain: 115.6 – 204.4, Extremely heavy rain: 204.5 or more.